

3	28	79
Li	Ni	Au
6.941	58.69	196.967



Targeting Key Global Demand-driven Commodities



Gold Coast Investment Showcase

June 22 2016

David Crook, Managing
Director

Disclaimer and Competent Person's Statement



- This presentation is provided to you for the sole purpose of providing preliminary background technical, financial and other information to enable you to review the business activities of Pioneer Resources Limited ("Pioneer" or "the Company").
- The material provided to you does not constitute an invitation, solicitation, recommendation or an offer to purchase or subscribe for securities.
- This presentation may contain "forward looking statements" which are made in good faith and are believed to have reasonable basis. However, such forward looking statements are subject to risks, uncertainties and other factors which could cause the actual results to differ materially from the future results expressed, projected or implied by forward looking statements.
- The information within this report was compiled by Mr. David Crook who is a full time employee of Pioneer Resources Limited, a member of The Australasian Institute of Mining and Metallurgy (member 105893) and is a Competent Person as defined by the 2012 JORC Code, having five years experience which is relevant to the type of activities described in the Report. This person consents to the inclusion of this information in the form and context in which it appears in this report.

For further information

- (Acra) refer to the Company's announcements dated 16 April 2014, 22 October 2014, 26 June 2015, 6 October 2015, 18 December 2015, 15 February 2016.
- (Mavis) refer to the Company's announcements dated 15 March 2016, 20 April 2016,
- (Phillips River) refer to the Company's announcements dated 6 April 2016
- (Donnelly River) refer to the Company's announcements dated 26 April 2016
- (Pioneer Dome) refer to the Company's announcements dated 29 April 2016, 18 May 2016
- Also refer to the Company's quarterly Activities Reports.
- The Company it is not aware of any new information or data that materially affects the information included in this Presentation

2016 Sees an Addition to the Company's Strategy



3	28	79
Li	Ni	Au
6.941	58.69	196.967



Lithium Strategy Added



3	28	79
Li	Ni	Au
6.941	58.69	196.967

***Pioneer is actively focussed
on key global demand
driven commodities***

***—
Lithium and Gold***

Lithium Strategy



3	28	79
Li	Ni	Au
6.941	58.69	196.967

*Everyone's talking about
Lithium... and they should
be, "It's the next gasoline."*

Brian Colwell

**Total to Buy Battery Maker
Saft in Push to Expand Clean
Energy**

Lithium Strategy

New Acquisitions

3	28	79
Li	Ni	Au
6.941	58.69	196.967

Pioneer
RESOURCES LIMITED

Mavis Lake: Ontario Canada

Pegmatite Field – Spodumene in drilling

Pioneer Dome: Eastern Goldfields

Mt Marion – Pegmatite Li

Phillip River: Ravensthorpe

Mt Cattlin - Pegmatite Li

Donnelly River: Greenbushes

Greenbushes – worlds Largest Pegmatite Li

3	28	79
Li	Ni	Au
6.941	58.69	196.967

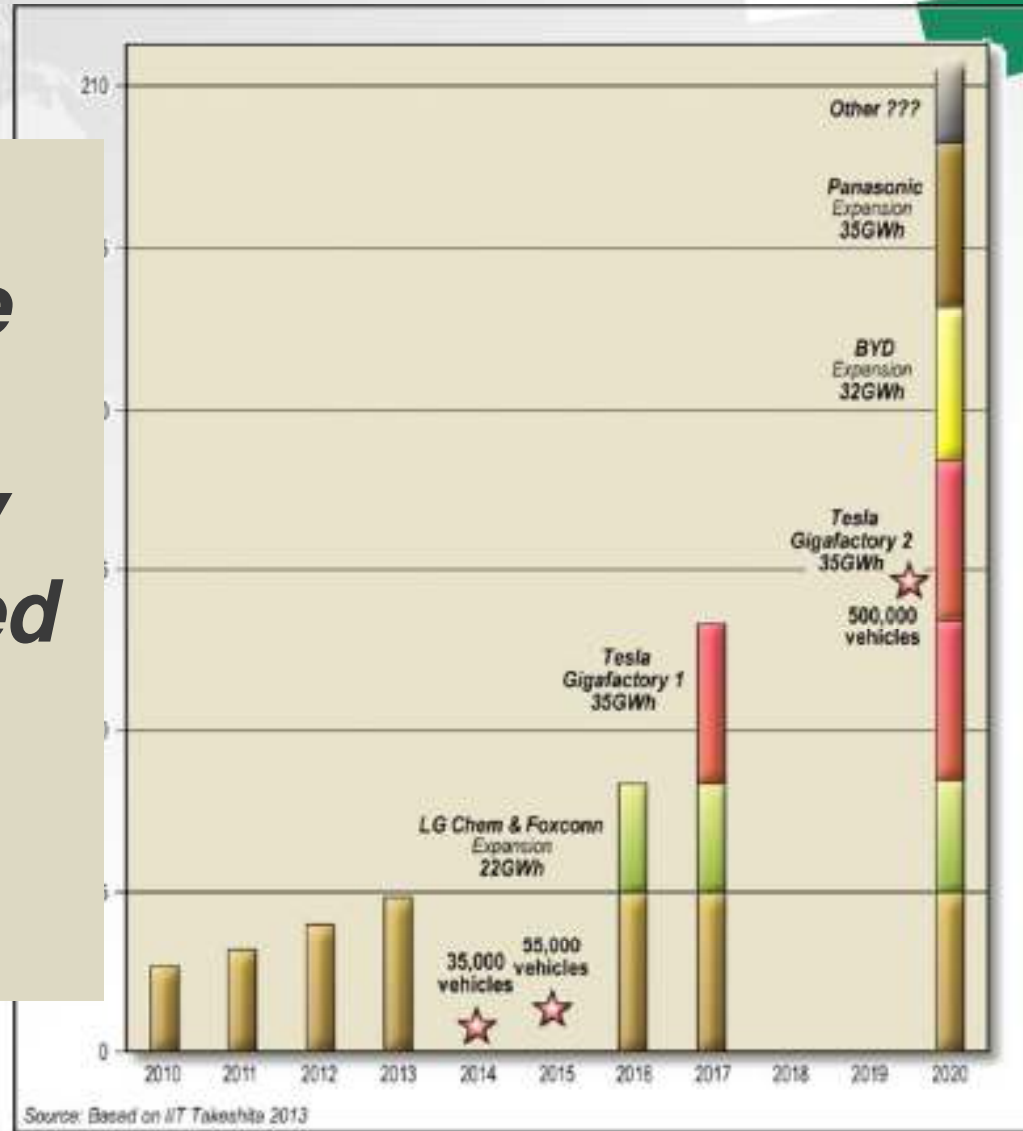
The Lithium Market Today

- Estimated demand 2015 : ~160,00ktpa LCE (2014: ~150 ktpa)
- Lithium Market 'Value': ~US\$900 million.
- Market could grow to 4-500ktpa in next decade.
- Brine sources are dominant supply at present.
- Time to construct and high capex of future brine production are creating opportunities for hard-rock projects.
- Australia is well-placed to play a significant role in future *downstream/value-add* production

3	28	79
Li	Ni	Au
6.941	58.69	196.967

“Battery storage will revolutionize the renewable energy sector by reducing the need for network investment.”

Simon Corbell



Corporate Snapshot



FOCUSED

Global Demand Driven Commodities

FUNDED

Approx \$2.2 million in cash

ACTIVE

Financial capacity to explore

LEVERAGE

Huge interest in Lithium

Gold is on the ascendency

Pioneer Price and Liquidity is up.



Current share price	4.2 cents
Shares on issue	900.4 million
Unlisted options	46.5 million
12-month range	1.0 – 10 cents
Cash	\$2.2 million
Market capitalisation	\$40 million

3	28	79
Li	Ni	Au
6.941	58.69	196.967

Well-Credentialed Board and Management



Craig McGown – Chairman (Finance)

- An investment banker with over 35 years' experience consulting to companies in Australia and internationally, particularly in the natural resources sector.
- The former Chairman of DJ Carmichael and currently with New Holland Capital.



David Crook – Managing Director (Geology)

- Founding Managing Director since 2003.
- A geologist with over 30 years' experience in the mining industry, including senior exploration, mining and management roles with a number of Australian and international companies.
- 25 years experience in the Kalgoorlie District



Allan Trench – Non-Executive Director (Geophysics, Management, Academia)

- A mineral economist, geophysicist and business management consultant.
- Professor CET at UWA and Curtin Graduate Business School.
- Perth representative CRU Strategies.



Wayne Spilsbury – Non-Executive Director (Geology)

- A geologist with over 35 years of experience including 28 years with Teck Cominco Limited - former General Manager, Exploration – Asia Pacific.
- Has worked on gold and base metal projects in Western Canada, the United States, Asia and Australia.



Nigel Brand – Consultant (Geochemistry)

- Internationally regarded specialist geochemist



The Mavis Lithium Project Update: Field Crew on Site



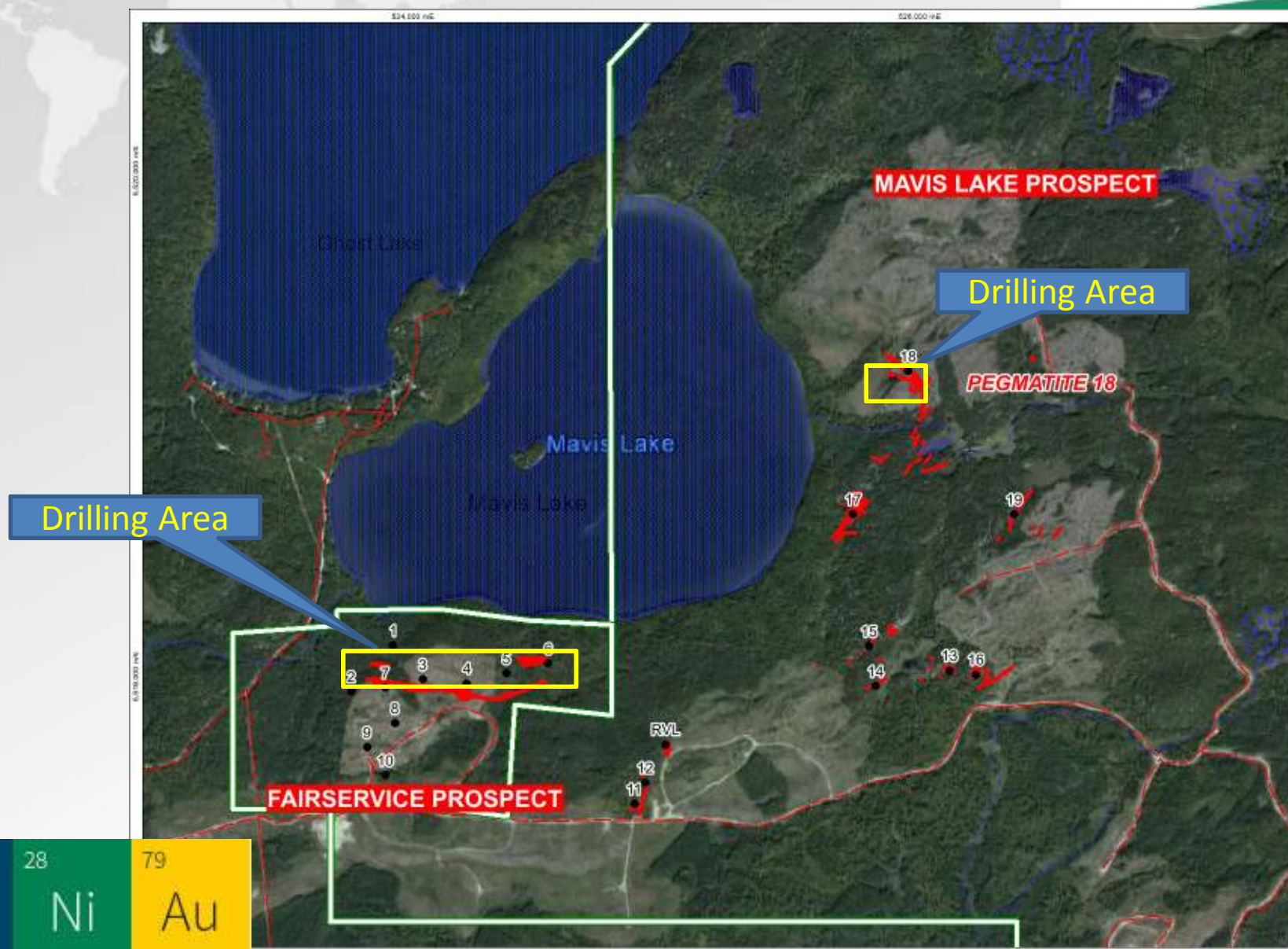
Option Agreement With International Lithium Corp
\$100,000 Placement, now worth \$400,000

Initially earn 51% Project Equity through

- expending \$1.5m and
- paying \$0.375m in cash/scrip mix

3	28	79
Li	Ni	Au
6.941	58.69	196.967

LCT Pegmatite Targets at Mavis



3	28	79
Li	Ni	Au
6.941	58.69	196.967

Targeted Mineralisation: Spodumene in LCT Pegmatite



- MF-11-08: 7m at 1.83% Li₂O from 4m
- MF-11-09: 7.8m at 1.86% Li₂O from 18.85m
- MF-11-12: 16m at 1.53% Li₂O from 125m
- MF-11-12: 26.25m at 1.55% Li₂O from 152m
- MF-11-13: 5m at 1.44% Li₂O from 19m
- MF-11-14: 3m at 2.15% Li₂O from 24m
- MF-12-24: 16.4m at 1.86% Li₂O from 161.9m
- MF-12-25: 5.15m at 1.75% Li₂O from 130.7m
- MF-12-28: 6m at 2.53% Li₂O from 6m
- MF-12-30: 6.95m at 1.45% Li₂O from 32.25m
- MF-12-33: 3m at 2.26% Li₂O from 22m
- MF-12-34: 5m at 1.5% Li₂O from 24m
- MF-12-36: 6m at 1.48% Li₂O from 31m
- MF-11-15: 5.35m at 1.51% Li₂O from 78.4m**

* All widths reported are drill core widths and have not been converted into true width. Appropriate rounding of Li₂O values applied.

** To date only 3 holes have been drilled at the Mavis Lake 18 Pegmatite, including MF-11-15.

3	28	79
Li	Ni	Au
6.941	58.69	196.967

New Discoveries - Open to expansion



Fairservice Pegmatite
John Harrop, Fred Breaks, Mike Sieb, First Nations Rep



Fairservice Pegmatite with spodumene mineralisation

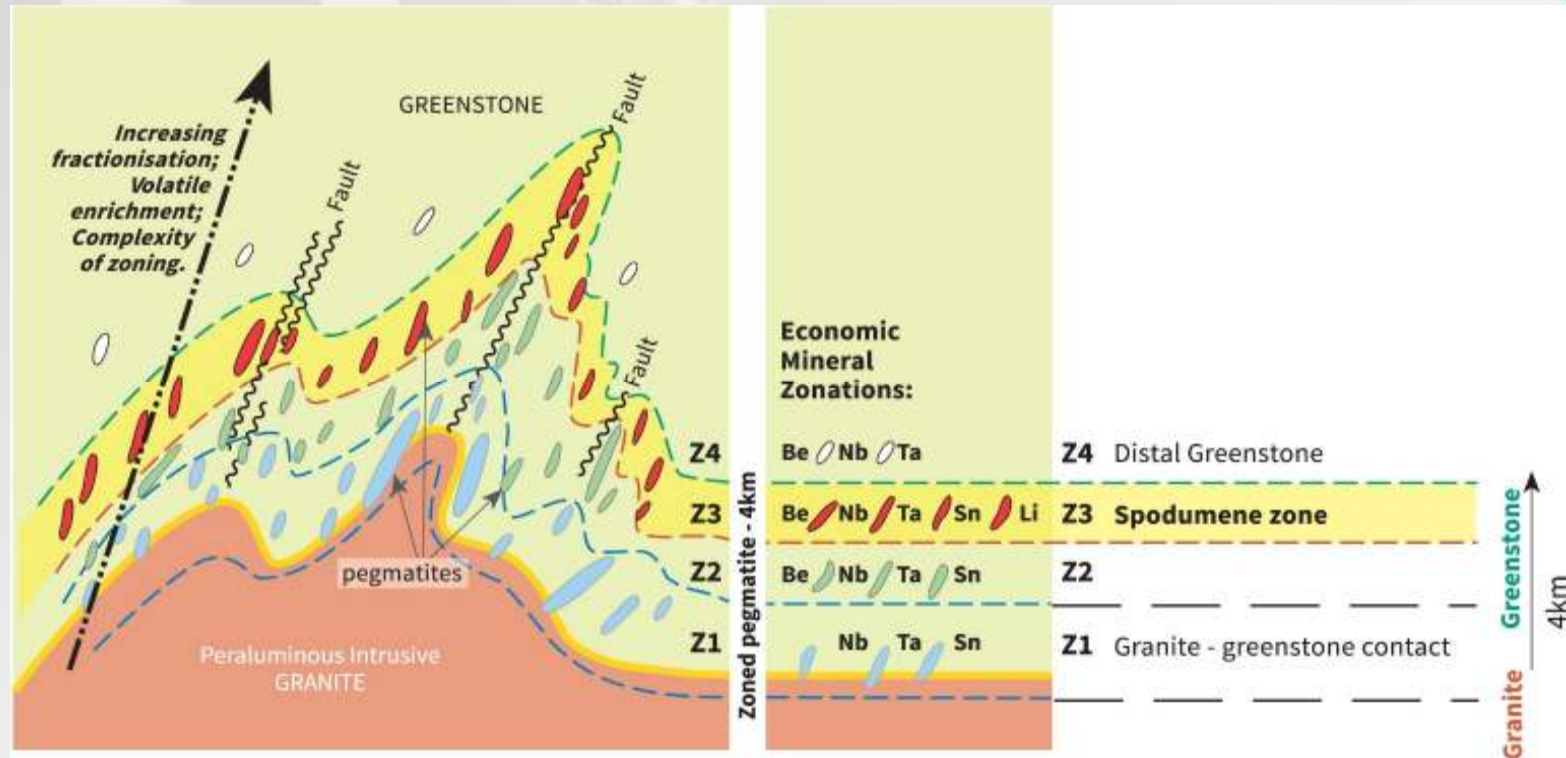


Fairservice drill core with spodumene mineralisation



Mavis Pegmatite 18 with spodumene mineralisation

Zonation in Pegmatites

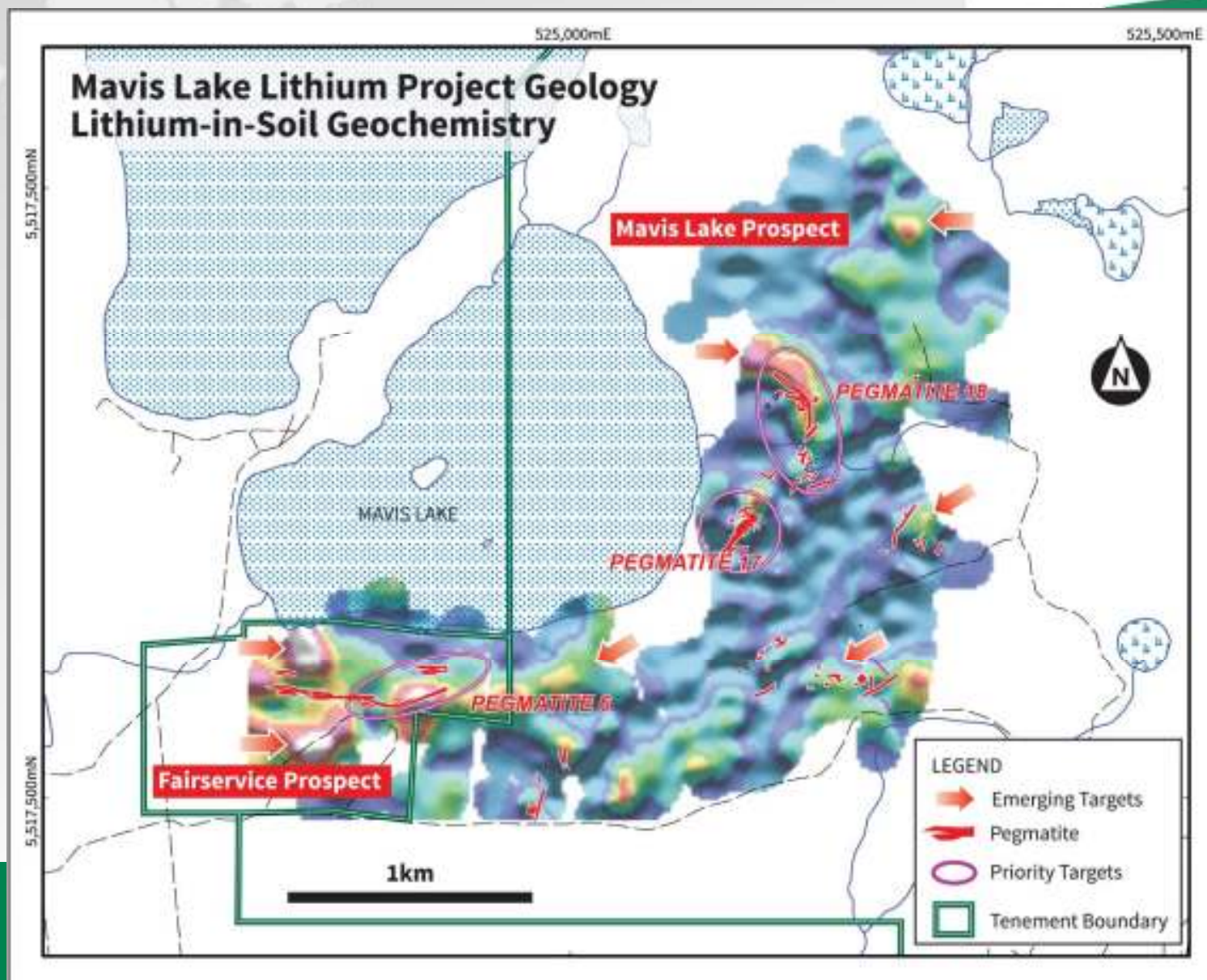


Schematic regional mineral zonation outboard of a fertile, peraluminous S-type granite, showing swarms of associated pegmatite dykes.

Adapted by Pioneer from Černý 1991, Breaks et al 2003.

3	28	79
Li	Ni	Au
6.941	58.69	196.967

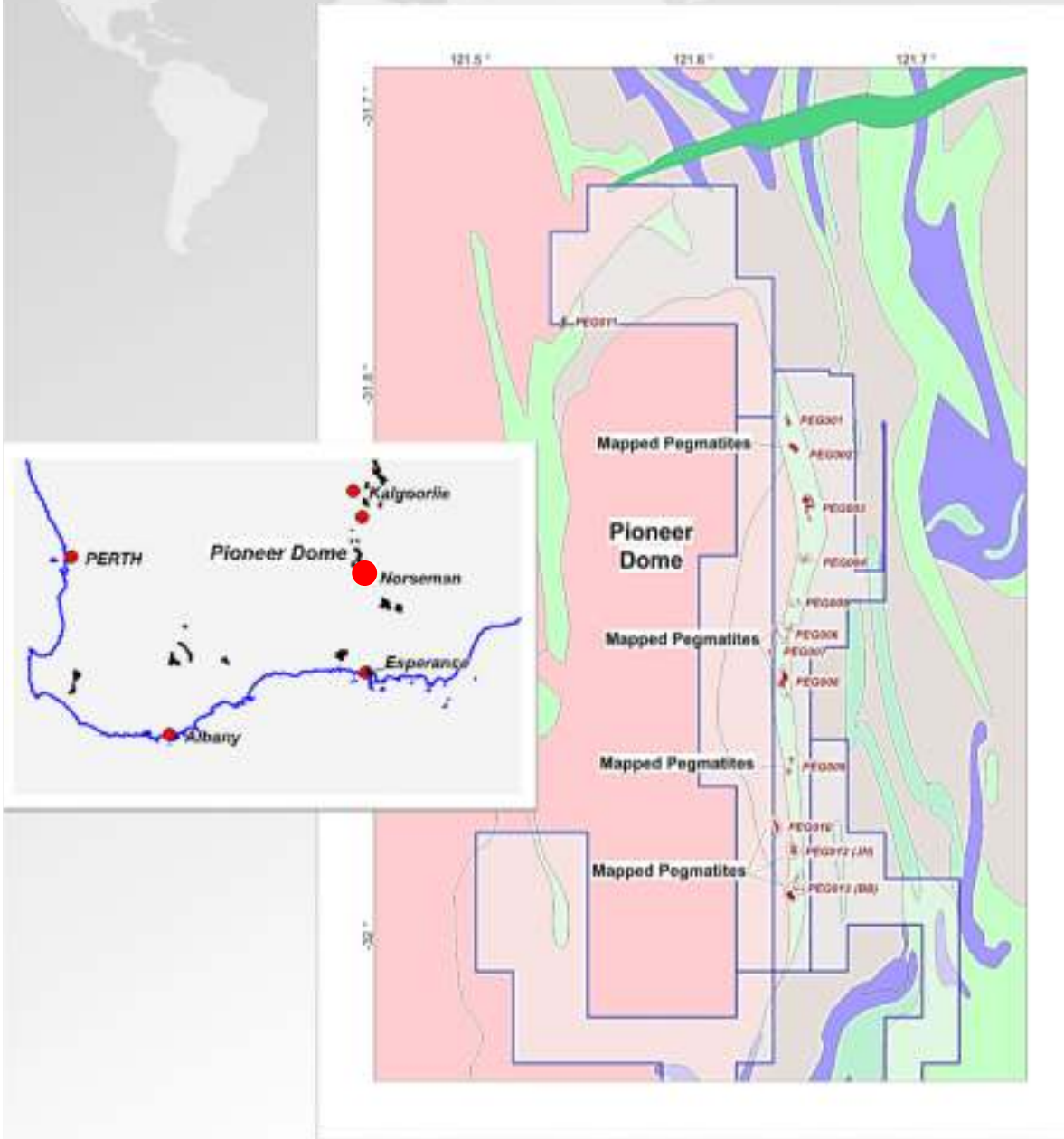
LCT Pegmatite Targets at Mavis



3	28
Li	Ni
6.941	58.69

196.967

Pioneer Dome Pegmatite Field



PEG009 is an example of a complex LCT pegmatite with lepidolite mineralisation.

Reference samples, assays and Soil Geochemistry Results

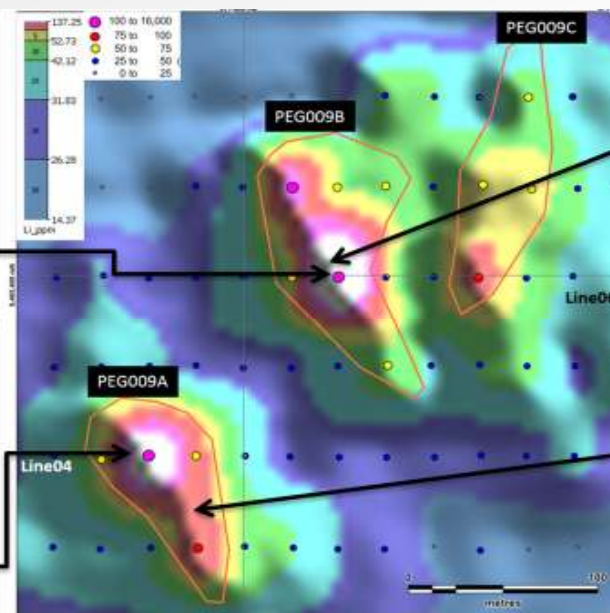
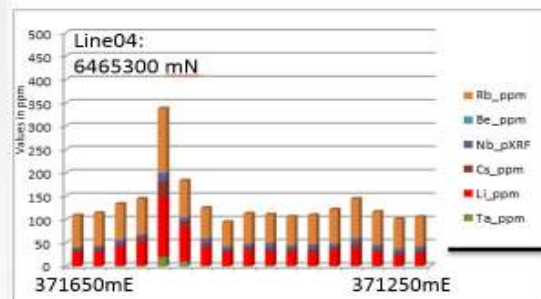
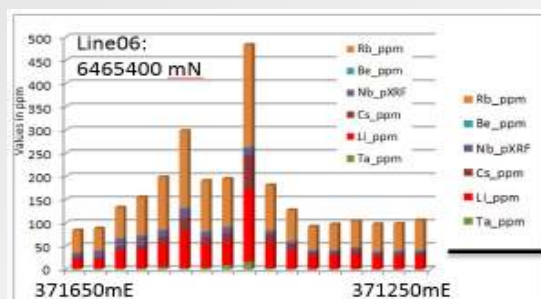


3.94% Li₂O

2.55% Li₂O

3.29% Li₂O

3.84% Li₂O



PEG009B Lepidolite poor samples on Line06



PEG009A Lepidolite rich samples on Line04

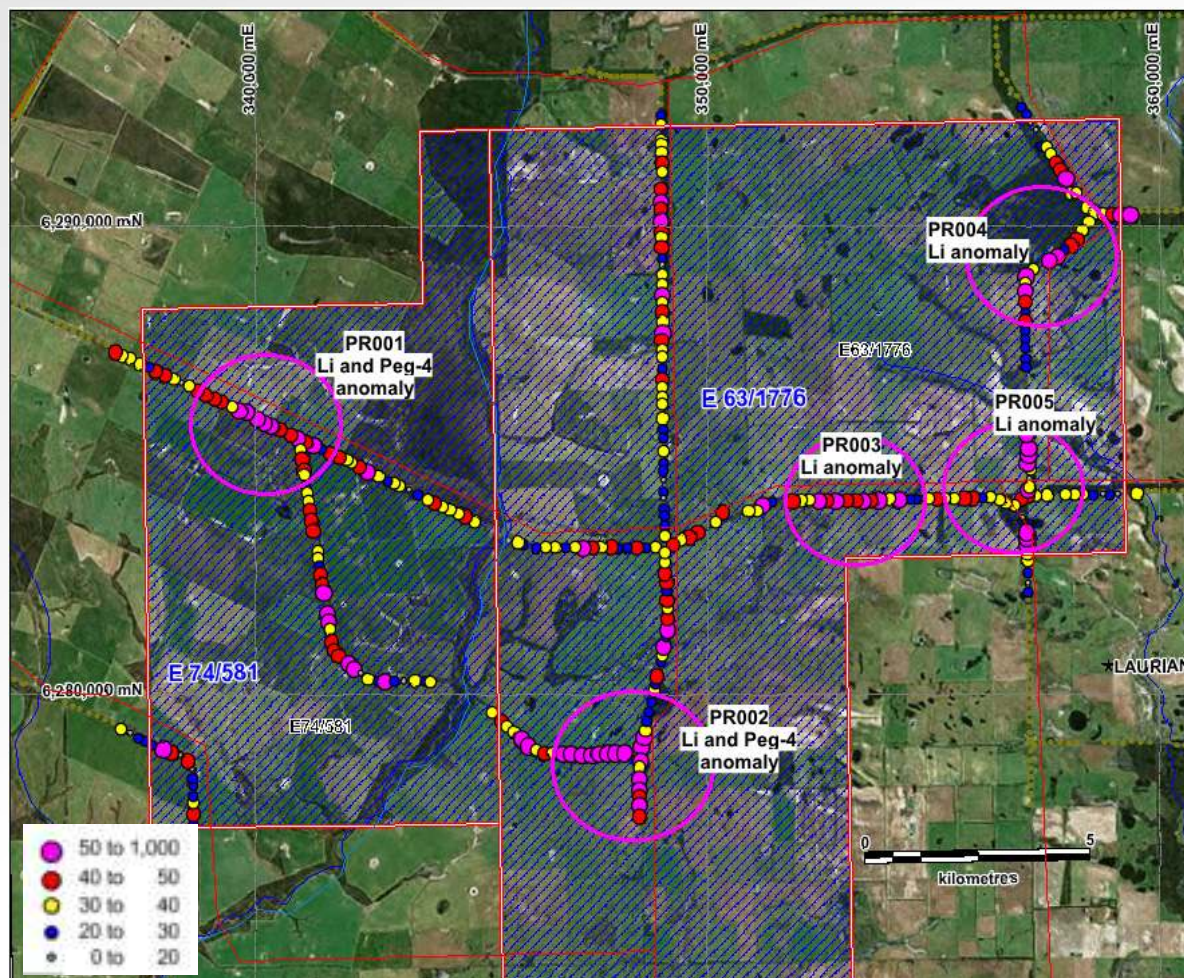
Phillips River



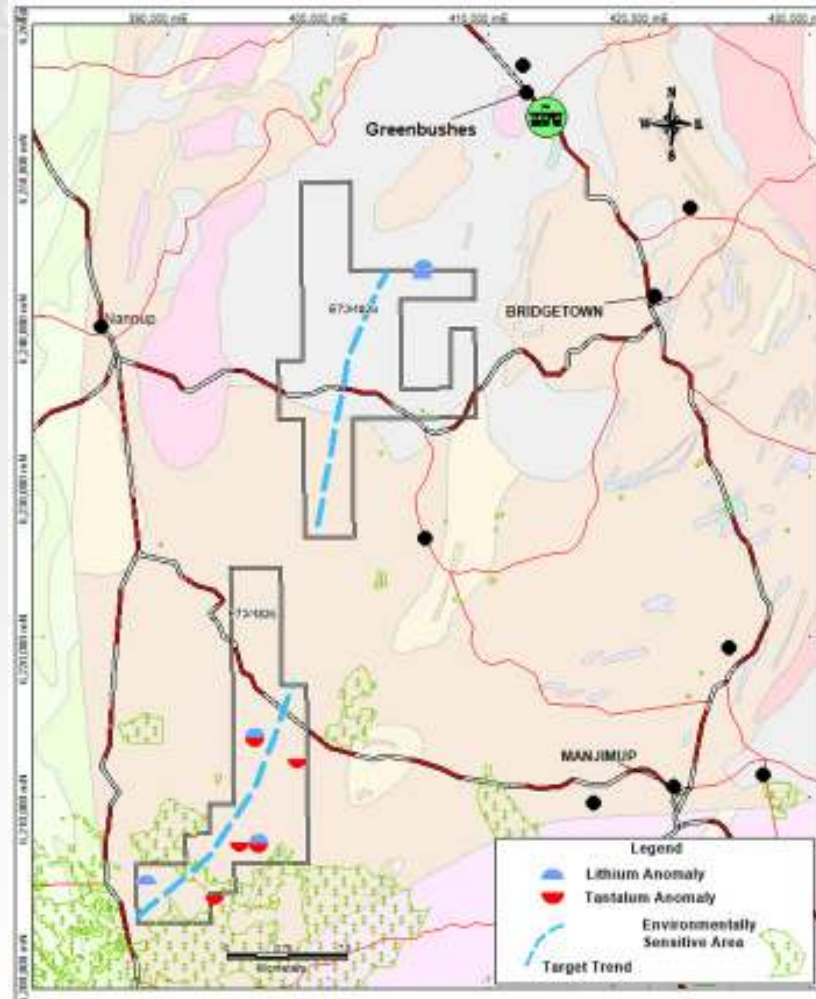
**Roadside soil samples
coloured by Lithium values in
ppm.**

(Data from Fletcher and Howard, 2010;
Eddison and Fairall, 2012).

3	28	79
Li	Ni	Au
6.941	58.69	196.967



Donnelly River (Greenbushes)



3	28	79
Li	Ni	Au
6.941	58.69	196.967

Donnelly Lithium Project tenements and geochemistry anomalies

(Morris P.A. 2008).

Geographic Focus Eastern Gold Fields

Acra Gold Project

Drilling continues to impress

Next phase –

Determining the bigger picture



3	28	79
Li	Ni	Au
6.941	58.69	196.967

Acra Gold Project

A Growing Gold Project in Gold Bull Market is a Good Thing



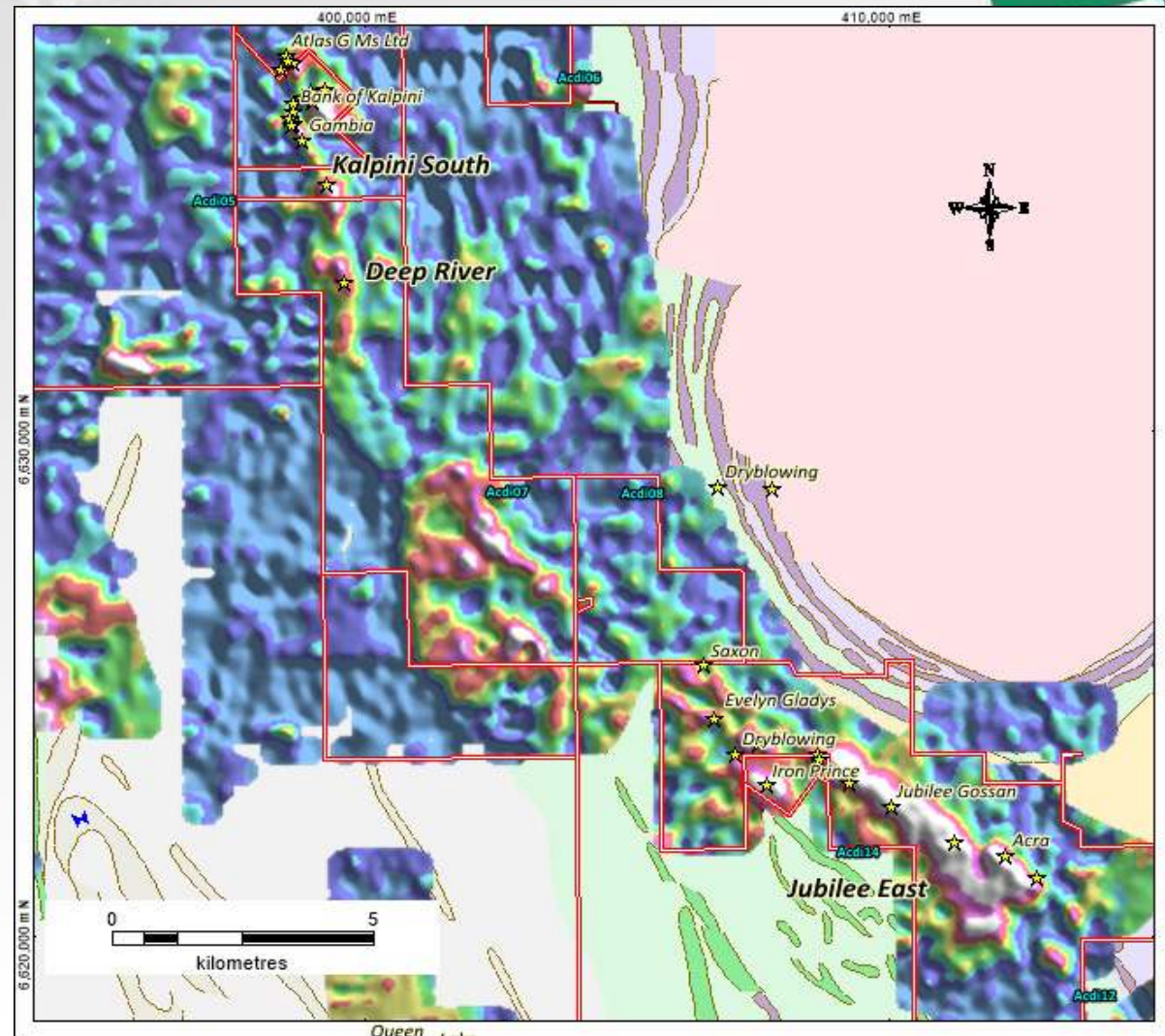
Ironically, this was our lead project when we listed in 2003

Pioneer acquired the Gold Rights from Xstrata, after a history of nickel exploration

The Project had a 30,000 point geochemical database

The data contained a 20km long gold-in-soil anomaly

Over 100 of the existing (nickel) holes intersected over 1.0g/t Au.



3	28	79
Li	Ni	Au
6.941	58.69	196.967

Acra Gold Project

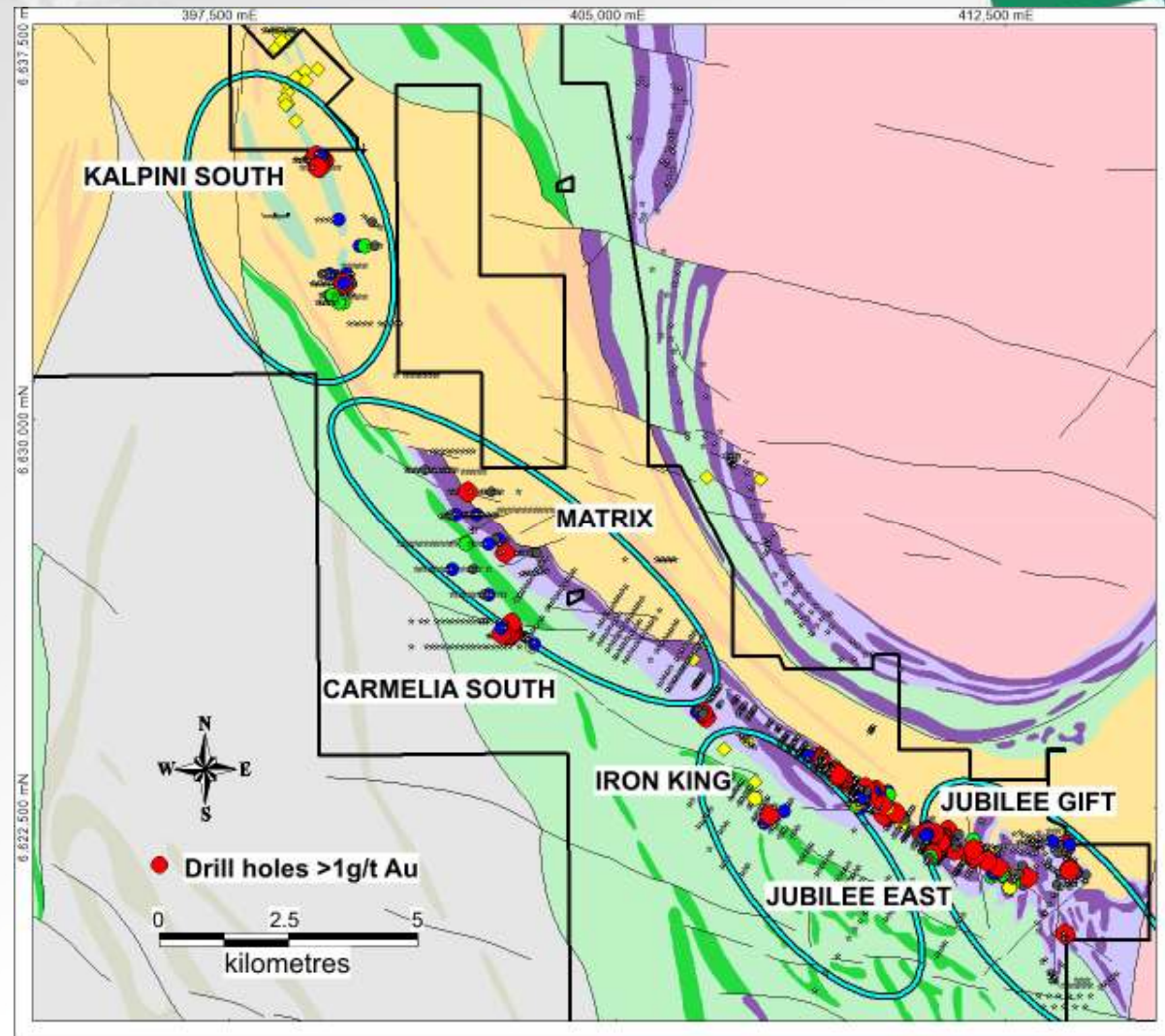
It's a good thing to have Gold Project in this Market



With 20km of strike to explore we needed a 'roadmap'

Work by D Isles, an aeromagnetic data specialist, has provided an exploration roadmap, using a 7 factor 'weight of evidence' approach.

Gold-focussed work infilling or extending 'nickel' generation geochemistry.



3	28	79
Li	Ni	Au
6.941	58.69	196.967

Acra Gold Project

continues to deliver exciting results at a number of prospects



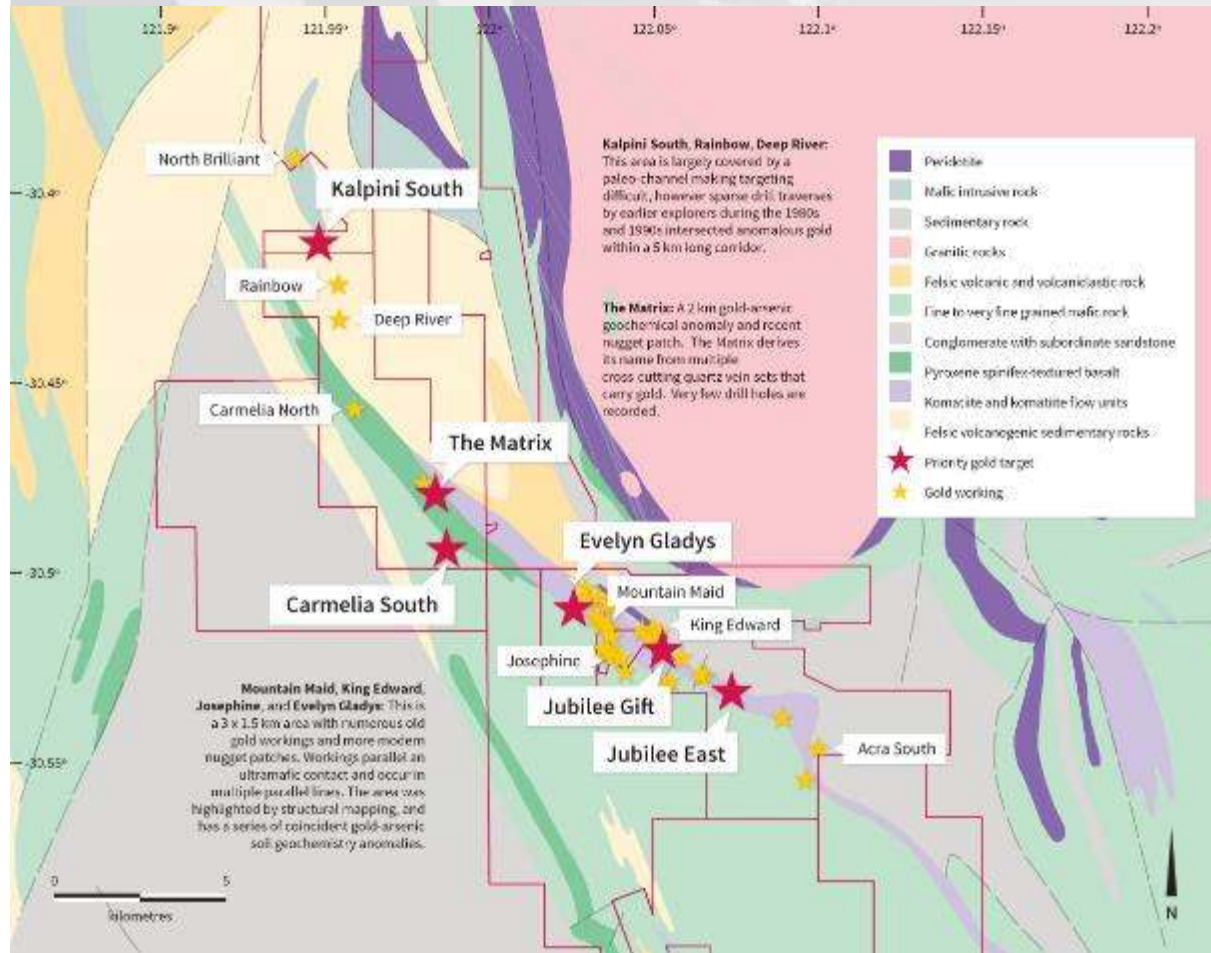
Drilling Results confirm gold endowment.

Kalpini South:

KSRC004: 10m at 6.38g/t from 61m
 KSRC004: 5m at 3.29g/t from 100m
 KSRC004: 8m at 1.45g/t from 85m
 KSRC005: 9m at 5.31g/t from 36m
 KSRC007: 13m at 3.31g/t from 94m
 KSRC007: 12m at 0.91g/t from 113m
 KSRC010: 3m at 5.44g/t from 128m
 KSRC010: 8m at 1.41g/t from 85m
 KSRC018: 18m at 1.98g/t from 97m
 KSRC021: 6m at 1.89g/t from 85m
 KSRC031: 9m at 6.17g/t from 60m
 KSRC032: 7m at 1.93g/t from 106m
 KSRC024: 0.22m at 116.5g/t from 131m
 KSRC025: 2.2m at 12.17g/t from 145.42m

Jubilee East:

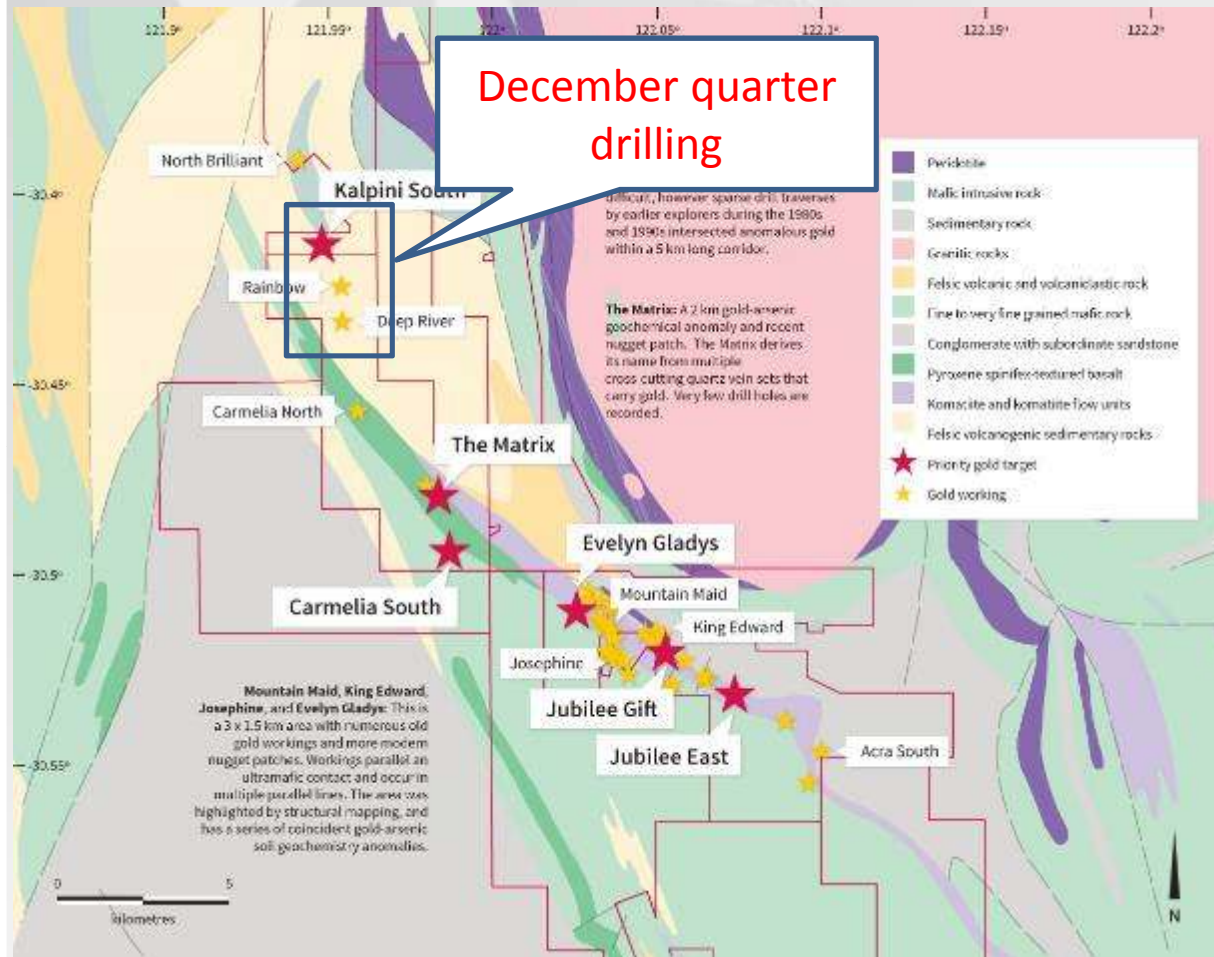
JERC002: 13m at 2.84g/t from 27m
 JERC003: 2m at 12.42g/t from 57m
 JERC007: 4m at 8.1g/t from 34m
 JERC010: 7m at 2.6g/t from 101m
 JERC038: 8m at 2.14g/t from 52m



3	28	79
Li	Ni	Au
6.941	58.69	196.967

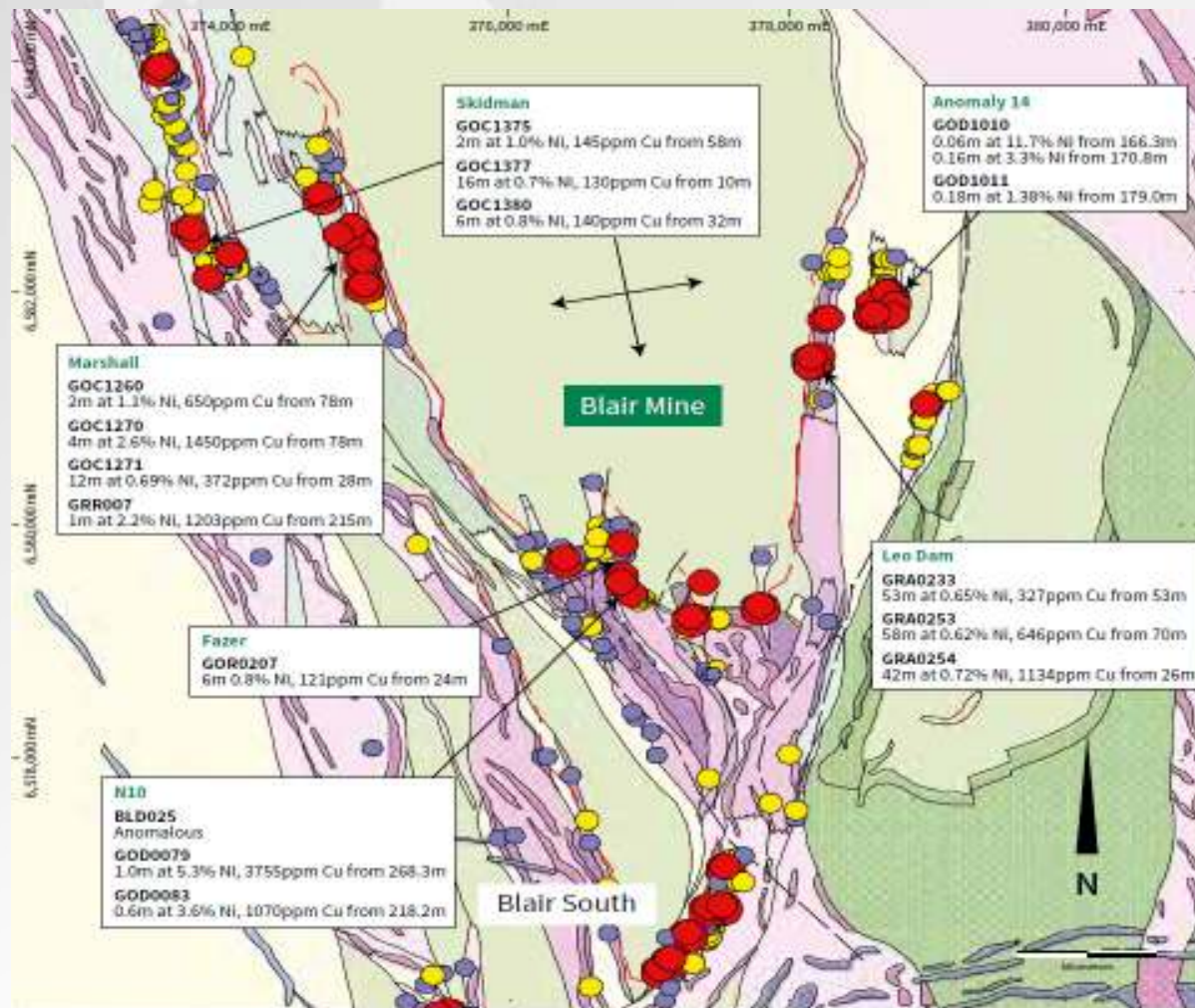
Acra Gold Project

There is a lot more to discover



Results provide evidence of new targets over a big area – but still a fraction of the project's extent.

Blair Dome Project EIS funding for diamond drilling



Interpretive Geology of the Blair Dome

Forthcoming Work Programs



Lithium Projects: Rare-metal geochemistry coupled with geological, structural and detailed geophysical data will be the key to new-target generation.

MAVIS

- Ground magnetic survey: pegmatites are represented as magnetic lows.
- Soil geochemistry: Much of the property hasn't been sampled.
- Drilling: to identify new, and further define known, spodumene occurrences.
- Work programs start in June 2016 – geologists on the ground now

PIONEER DOME

- Soil geochemistry: 10,000 samples covering over 13 mapped pegmatites – 20% complete.
- Existing drilling: pegmatite intersections resampled.
- This work is in progress – early results this month.

ACRA, DINGO DAM, FAIRWATER

- Air Core Drilling at each

BLAIR DOME

- Diamond Drilling

3	28	79
Li	Ni	Au
6.941	58.69	196.967



Contact us



+61 8 9322 6974



pioneer@pioresources.com.au



21 Ord Street, West Perth WA 6005



PO Box 1787, West Perth WA 6872



www.pioresources.com.au